



99th Edition

Collier-Lee-Charlotte County Traffic Incident Management Team

January 2022



INSIDE THIS ISSUE:

Talking TIM Webinar 1

Responder Safety Podcast 1

FDOT District One Meeting Wrong Way Drivers Head On 2

Upcoming Events

TIM Team Meeting:

Wednesday
February 9, 2022
9:30 am



Stay In Touch with Your TIM Community



Talking TIM Webinar

The Federal Highway Administration (FHWA) is having the "Talking TIM Webinar" January 26, 2022. The Federal Highway Administration, Office of Operations, organize and moderate this webinar series hosted by the National Operations Center of Excellence (NOCoE). The webinar series features members in the TIM community. This month the webinar will include the following presenters and topics:

- Illinois TIM Program Overview and Training Video Use. Robin Helmerichs, Traffic Incident Management Coordinator at Illinois Department of Transportation
- Law Enforcement and First Responder Interactions Plans for Automated Driving Systems (ADS). Anita Kim, Technology Policy and Innovation, U.S. DOT Volpe Center
- Total Solar Eclipse Planning for 2023 and 2024. Dr. Kelly Korreck, Program Scientist, National Aeronautics and Space Administration and David Johnson, Road Weather and Work Zone Management Team Leader, FHWA.

To register for the event, please click on the following link: [Registration](#)



ResponderSafety.com Podcast

The Emergency Responder Safety Institute presents the ResponderSafety.com podcast, a closer look at hot topics, new information, innovative approaches, and case studies in responder safety at roadway incidents and in traffic incident management. Listen for practical, actionable information you can implement today at your next roadway incident

response to improve safety of emergency response personnel and the public, no matter which agency you work for. Come learn from interviews and special features with experts and leaders in emergency services. All agencies who respond to roadway incidents — fire, EMS, fire police, law enforcement, DOT, safety service patrols, special traffic units, medevac, and towing and recovery — are all welcome and will find value in what we discuss.

[Episode 3: Rich Marinucci](#) - On Episode 3 of the ResponderSafety.com podcast, Chief Rich Marinucci, Executive Director of the Fire Department Safety Officers Association (FDSOA), offers his take on the biggest safety risks to firefighters today, the role of the safety officer at roadway incident responses, why preventable deaths from operations like backing up apparatus are still happening, and the FDSOA's new Certified Traffic Incident Management Technician credential.

[Episode 2: Loveland-Symmes](#) - Today we're going to take a closer look at the emergency services unit of the Loveland-Symmes Ohio Fire Department.

[Episode 1: In the Beginning](#) - Steve Austin and Jack Sullivan from the Emergency Responder Safety Institute discuss how the organization and ResponderSafety.com got started and plans for the future. Bob Beamis of the Pennsylvania State Police recounts his experience being struck and injured while working at a roadway incident scene.

To listen to the latest podcast, please click on the following link: [Podcast](#)

FDOT District One Meeting Wrong Way Drivers Head On

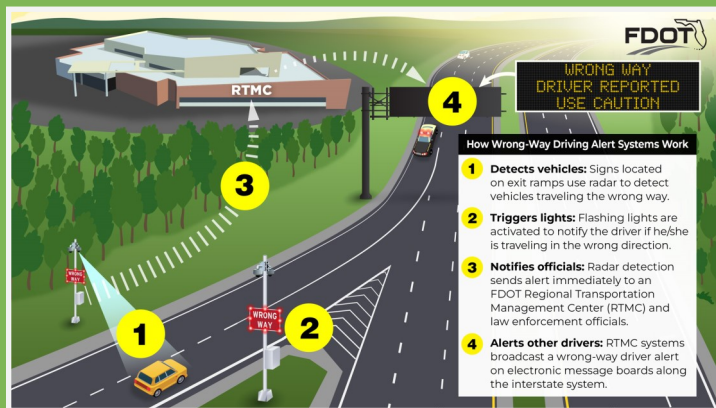


Wrong way crashes occur when a vehicle has not observed posted traffic signs or pavement markings and proceeds in a lane going the wrong direction. Drivers may intentionally drive in the wrong direction because they missed an exit, for thrill-seeking, or as a shortcut. On a divided highway, especially a freeway, Wrong Way Drivers (WWD) are a serious problem because high speeds are usually involved and result in a head-on collision. Although WWD incidents are rather uncommon, making up about 3% of all motor vehicle accidents, they are the leading type of motor vehicle incidents that result in a fatality. In fact, some 360 deaths in the U.S. each year are due to wrong way driving incidents.¹

Researchers found that the odds of becoming a WWD increased with alcohol-impairment, older age, and driving without a passenger. “Wrong-way crashes on divided highways are often fatal as they are typically head-on collisions,” said Dr. David Yang, the executive director of the AAA Foundation for Traffic Safety.

The District One Florida Department of Transportation has implemented several measures when it comes to WWD. The two systems that are used for notifications are [Traffic Vision](#) and [Blink Link](#). When a WWD is detected, several activations occur:

- Notifications are sent via emails to on-duty operators. This includes screen shots of the WWD along with location and time stamps.
- When an event is started and a message is posted, within 15 miles in each direction, on local Dynamic Message Signs (DMS) stating **“Wrong Way Driver Reported Use Caution.”**
- If the WWD is verified the Traffic Management Center will notify the Florida Highway Patrol (FHP).



Florida Highway Patrol Advisement for WWD

At a recent TIM Team meeting, the FHP Traffic Highway Investigator informed the team that most WWD driving occurs in the left lane and encouraged all motorist to stay in the right lane, when possible. In the majority of WWD crashes, vehicles are hit head-on, resulting in 81 percent of all wrong way fatalities. Head-on collisions are some of the most dangerous and deadly crashes. Florida Highway Safety and Motor Vehicle (FLHSMV) offers the following safety tips for motorists to avoid wrong way driving crashes:

- Stay Right at Night to avoid crashes with wrong way drivers.
- Call 911 immediately to report wrong way drivers. If you see a wrong way driver approaching, immediately reduce your speed and pull off the roadway.
- Stay alert – do not drive distracted. Never drive under the influence of alcohol or drugs.
- If you drive past a wrong way sign, turn around immediately. When you see a posted red sign, think: “Stop.” “Do Not Enter.” “Wrong Way.”
- Look for FDOT dynamic messaging signs for wrong way driver alerts. When you see an alert, reduce your speed, move over to the right and proceed with extreme caution. If you see a wrong way driver approaching, immediately pull off the roadway.²

If you would like additional information on WWD or have any questions, please contact Tom Arsenault, Program Manager at tom.arsenault@dot.state.fl.us and/or 407-607-5990.

¹ Highway Special Investigation Report, Wrong-Way Driving.. National Safety Transportation Board. Web February 2018. <https://www.nts.gov/safety/safety-studies/Documents/SIR1201.pdf>

² Safety Driving, Wrong-Way Driving. Florida Highway Safety and Motor Vehicle. Web January 2022. <https://www.flhsmv.gov/safety-center/driving-safety/wrong-way-driving/>

Article submitted by Tom Arsenault, Metric Engineering, Inc.

T I M TEAM WEBSITE!

www.swfltim.org

The Collier-Lee-Charlotte County TIM Team is committed to implementing the Quick Clearance principles of Florida’s Open Roads Policy through the “3 Cs” of TIM: Communication, Cooperation and Coordination, and providing the public with the best real-time Motorist Information available. Team membership draws from state, regional, and local transportation agencies, public safety providers, and other organizations and companies that service the traveling public. The Teams, sponsored by the FDOT, meet bi-monthly.

Mission

The TIM Team Program brings together all agencies involved in clearing the roadway crashes with the objective of improving detection, verification, response, and clearance times to expeditiously remove a motor vehicle crash or incident from the roadway while providing the best real-time information to motorists, resulting in a safer highway environment for both incident responders and motorists.

